

Astral®

DISEASE MANAGEMENT FROM ANOTHER DIMENSION

Late Season Powdery Mildew Control in Pipfruit

Features:

- Prevents & Cures Powdery Mildew
- Fast activity – works in minutes
- Low toxicity to Environment & User
- Built-in surfactant technology
- Multi-site activity
- No residue issues

Active Ingredient

A sophisticated high purity potassium bicarbonate based product formulated with a proprietary wetting system to optimise coverage and performance. This unique formulation provides superior efficacy to potassium bicarbonate alone and is the result of many years of development of this promising technology. Astral® has both fungistatic and fungicidal effects. The proprietary wetting system ensures excellent coverage so when the spray solution dries fine crystals of potassium bicarbonate are evenly spread over the treated surface. Even product distribution results in greater contact with the fungi and superior performance.

Benefits

- Ideal mid to late season Powdery Mildew Control option
- Non Residual with a 7 day WHP
- Stops mildew spread FAST
- 'Soft' on the environment and user
- Multisite – no known resistance
- Food grade product recognized by global Food Agencies.

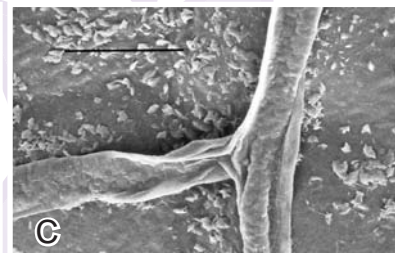
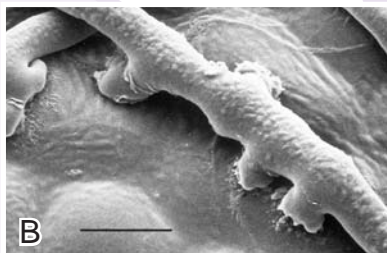


Multi-site Activity

1. Buffers pH on leaf surfaces to the detriment of fungal spores
2. Dries out fungal spores by increasing osmotic levels.
3. Inhibits germ tube growth by destroying cell membranes

Astral has both fungistatic and fungicidal effects.

Left: Powdery Mildew on a leaf surface.



Electron Micrograph is showing the contact-kill of Astral on powdery mildew spores within minutes of application. The mildew spore on the left was not treated with Astral, it is healthy and sending out an infectious tube. The two mildew spores on the right were treated with Astral causing rapid water loss.

Powdery Mildew mycelium before the application of Astral.

Powdery Mildew mycelium after application of Astral.

Astral®

DISEASE MANAGEMENT FROM ANOTHER DIMENSION

Directions for Use (Read label before use)

Powdery Mildew: Apply 250 – 500 g per 100 litres of water (minimum 2.5-5.0 kgs/ha). Apply on a 7–14 day schedule, from 5th cover to pre-harvest. Where conditions are conducive to sustained high disease pressure use the higher rate of application and the shorter spray interval. Under heavy disease pressure and established infections, other eradicant fungicides may be required (subject to withholding period restrictions).

Powdery Mildew Control from 5th to 8th cover apples. Fruited Supplies Research – Royal Gala

Treatment / 100L Water rate 1300 – 2600 L /ha	% Infected Shoot Tips (07.01.05)
Untreated	65.00 b
Euparen Multi® 100 mls (2 applications)	13.00 a
Astral 350 gms (3 applications)	15.00 a

Secondary Powdery Mildew Control at 4th cover after 5 appns from late bloom to 3rd cover. Powdery Mildew Geelen Research – Royal Gala.

Treatment / 100L	P.M. % Control
Astral 250 g / 100L	25 b
Astral 500 g / 100L	57 a
Nimrod® 50 g / 100 L	69 a
Stroby® 10 g / 100 L	57 a

Directions for Use

- Do not mix Astral in an acidic tank mix (Astral has a an approximate pH of 8.0)
- Do not add extra surfactants when spraying Astral
- Do not apply more then 5 kgs per hectare per week of Astral
- Ensure good coverage
- Preventative control is best practice

Pack Size: 25 kg

Withholding Period: 7 days

Elliott Technologies Limited, PO Box 838, Pukekohe NZ
 Freephone: 0800 100 325 Telephone: +64 9 271 1401
www.elliott-technologies.co.nz

© Elliott is a registered trademarks of Elliott Technologies Ltd
 © Astral is a registered trademark of Elliott Technologies Ltd.
 Astral is registered pursuant to the ACVM Act 1997, No. P7761
 © Euparen Multi, Stroby and Nimrod are registered trademarks

